

# GREENDALE

## CARPETS & FLOORING

### MAURITIUS

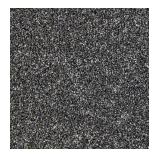
### Colours



BARK



BEAVER BROWN



CINDER



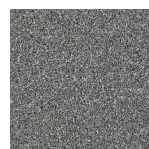
CINNAMON



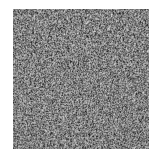
COTSWOLD



EARTH HUE



GREYSTONE



HAZY GREY



MISTY DAWN



PORRIDGE



ROPE



SOURDOUGH



TURMERIC

### Specification

Pile Content	<b>100% 2PLY POLYPROP</b>
Backing	<b>SECONDARY BACKING</b>
Gauge	<b>1/8TH</b>
Tog Rating	<b>1.4</b>
Pile Weight	<b>1220GM SQM/36OZ SQYD</b>
Widths	<b>4.00 and 5.00 Metres</b>
Suitability	<b>HEAVY DOMESTIC</b>

Colours may vary, please visit your local Greendale retailer for samples.  
Not all colours in the range may be shown.

# GREENDALE

## CARPETS & FLOORING



Greendale Carpets & Floorings  
Greendale House, Whitestone Business Park  
Hereford, HR1 3SE

Phone 01432 852000  
Email [info@greendalecarpets.co.uk](mailto:info@greendalecarpets.co.uk)  
Website [www.greendalecarpets.co.uk](http://www.greendalecarpets.co.uk)